

AROUND TOWN



... NOW PLAYING... NOW PLAYING... NOW PLAYING... NOW PLAYING...

THE REPERTORY THEATRE OF ST LOUIS (314) 968 4925

The Fall of Heaven, January 5-30
The Year of Magical Thinking, January 12-30
Macbeth, February 9-March 6

THE BLACK REP (314) 534 3807

Pericles, January 5-30

UPSTREAM THEATER (314) 863 4999

Cooking with Elisa, January 7-23

METRO THEATER COMPANY (314) 997 6777

The Giver, January 7-23

MUSTARD SEED THEATRE (314) 719 8060

Shadowlands, January 28-February 13

STRAY DOG THEATRE (314) 865 1995

Distracted, February 3-19

AVALON THEATRE COMPANY (314) 351 6482

The Price, February 3-13

HOTCITY THEATRE (314) 289 4060

True West, February 4-19

BLACK CAT THEATRE (314) 781 8300

Round and Round the Garden, February 11-26

ST LOUIS ACTORS' STUDIO (314) 458 2978

Closer, February 11-27



PROMOTING AND CELEBRATING
EXCELLENCE IN PROFESSIONAL
ST. LOUIS THEATRE

www.kevinklineawards.org
(314) 531 7529

AMD anders minkler & diehl llp
CPAs + Consultants

MUSTARD SEED THEATRE

Fontbonne University Fine Arts Theatre

6800 Wydown Blvd.

Clayton, MO 63105

314-719-8060

mustardseedtheatre@gmail.com

www.mustardseedtheatre.com

MUSTARD SEED THEATRE PRESENTS



Shadowlands

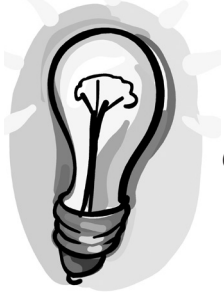
by William Nicholson

January 28- February 13, 2011

come
PLAY with
us!



**MST Trivia Night
Fundraiser!**



Saturday March 19, 2011

6:00–10:00 pm. (Rounds start at 6:30)

**Test your knowledge of trivial matters
while supporting Mustard Seed Theatre!**

Bring your friends to form a table of 6–10 players or come alone and make new friends! \$20 buys your seat, free beverages and delightful snacks. Or bring your own table decorations and gourmet spread – there will be a prize for the best-decorated table! The top 3 scoring teams will win cash prizes – and everyone has a chance to win one of our fabulous door prizes!

Call 314-719-8060 to make reservations!

Then see:

TILL WE HAVE FACES

A powerful Queen must surrender to invisible forces to rescue her sister and discover the secret of true beauty. Adapted from the novel by C.S. Lewis.

April 15 - May 1, 2011



ABOUT THE AUTHOR

William Nicholson is an English writer from Sussex. He attended Christ's College in Cambridge, England before working for the BBC, creating documentaries.

During his college days, he developed a passion for scriptwriting. He initially concentrated on creating plays for television before turning to traditional theatres.

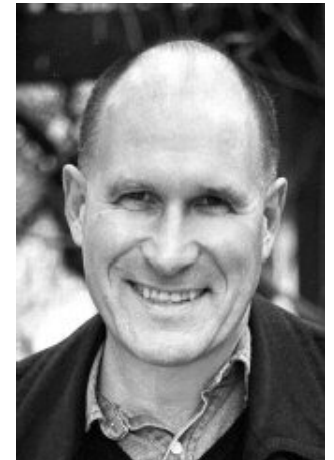
His first play, *Shadowlands*, was first directed for television and won a BAFTA Best Television Drama award. *Shadowlands* was then adapted for stage, where it won the Evening Standard Best Play of 1990. It later enjoyed a run on Broadway where it received a Tony Award.

Shadowlands was again adapted when it was translated for cinema. The film starred Anthony Hopkins and Debra Winger. In 1994, it was nominated for both a BAFTA and an Oscar in the "Best Adapted Screenplay" category.

Nicholson's successes have not been limited to *Shadowlands* alone. He has written numerous film scripts since, most notably, "Sarafina," "Nell," "Elizabeth," and "Gladiator." In 2000, "Gladiator" won an Oscar for "Best Picture".

Nicholson has since extended his writing career to novels and has received numerous critical acclamations for his series of young adult literature.

Nicholson currently resides in Sussex, England with his wife and their three children.



HISTORICAL NOTE, CONTINUED

Despite Lewis' historically noted uneasiness with England, he remained there until his death, noting the cultural differences between the Northern Irish and the English. In 1921, He met his literary hero, W.B. Yeats who had just become an Irish expatriot. It was after this encounter that Lewis formed the "Inklings," an informal literary group which contained J.R.R. Tolkien, Charles Williams, Owen Barfield, and Warnie Lewis.

He became a Cambridge don (or professor) in 1925 and remained there until 1954, teaching Medieval and Renaissance English in the city of Oxford, England. It was during his time as a professor and member of The Inklings, that he converted back to Christianity.

Christianity was incredibly important to his fiction and became the backbone of his writing until his death. He and his colleagues would often debate and argue religious points, and their work is commemorated within the Eagle & Child Pub, where they met every Tuesday.

After his literary success, Lewis began receiving numerous letters from admirers— one of whom was Joy Gresham. He was struck by the tone of familiarity in her letters and the two became close friends after she visited England. Following her divorce, Gresham moved to Oxford and the two married for her citizenship. However, their relationship developed over time and they decided to marry again out of love in 1956. This decision was made after Joy was diagnosed with advanced cancer. The two were married for four years before her death, with Lewis following her three years later.



Right: Joy Gresham and C.S. "Jack" Lewis

SHADOWLANDS

CAST

C.S. "Jack" Lewis	Gary Wayne Barker*°
Major W.H. "Warnie" Lewis	Richard Lewis
Professor Christopher Riley	B. Weller
Rev. "Harry" Harrington	Terry Meddows
Alan Gregg/Registrar/Priest	Charlie Barron
Dr. Maurice Oakley/Doctor	Michael Brightman
Joy Gresham	Kelley Ryan°
Douglas Gresham	Jackson Mabrey
Clerk/Nurse	Carmen Russell°
Waiters	David Chandler

DESIGNERS AND CREW

Director	Deanna Jent
Stage Manager	Jean Lang
Assistant Stage Manager	Josie Zeugin
Set Design	Courtney Sanazaro
Light Design	Michael Sullivan
Costume Design	Jane Sullivan
Sound Design	Kareem Deanes
Props Master	Jon Hisaw
Master Electrician & Production Manager	Bess Moynihan
Shop Foreman	Jon Hisaw
Sound Board Operator	Justin Walker
Light Board Operator	Izzy Liu
Props Run Crew	David Chandler
Wardrobe crew	Zoe Sullivan
Publications Intern	Liz Richter
Education and Outreach	Emily Immer

*denotes member of Actors' Equity Association,
the union of professional actors and stage managers
° denotes Resident Artist

CHARACTERS

The Oxford Men:

C.S. “Jack” Lewis, Professor and Writer
Major Warnie Lewis, his older bachelor brother
Christopher Riley, a colleague
Reverend “Harry” Harrington, a colleague
Dr. Maurice Oakley, a colleague
Alan Gregg, a colleague

The Americans:

Joy Gresham, a poet and fan of Lewis
Douglas Gresham, her eight-year old son

Others:

Registrar, Clerk, Doctor, Nurse, Priest, Waiters

SETTING

Oxford University, England
1955-1960



HISTORICAL NOTE

C.S. Lewis was born Clive Staples Lewis in Belfast, Ireland on November 29, 1898. He was called “Jack” by close friends and family– a nickname that arose after his beloved childhood dog, Jacksie, was accidentally killed. Lewis was four at the time and from then on demanded to be called “Jack.”

Lewis fell in love with writing at an early age, and after discovering Beatrix Potter’s work, he began writing short fiction based on the lives of animals.

At age fifteen, he abandoned his faith and the Church of Ireland to become an atheist. It was at this time that he became heavily interested in Celtic and Norse mythology, pagan societies, as well as Gaelic and Irish heritage poetry.

He studied privately with the headmaster of Lurgan College and gradually moved away from his childhood short fiction to epic poetry, opera, and debate. His tutor, William T. Kirkpatrick,



instilled in him a love for Greek mythology and helped hone his writing skills which later allowed him to attend Oxford University in 1916.

Lewis temporarily abandoned his studies during WWI to join the Third Battalion, Somerset Light Infantry. He was stationed in the Somme Valley, France, and lived through trench warfare. He was wounded by friendly fire in 1918 and was restationed in Andover, England until he was discharged in December of 1918. He then returned to Oxford to continue his studies.

Above: Clive Staples Lewis

BIOGRAPHIES – DESIGNERS



Jane Sullivan serves as a Kevin Kline Award judge and a board member for ACT INC. She is excited to be working with her husband Michael, Deanna and Mustard Seed Theatre. Jane thanks Michael, Mark and Zoe for their encouragement, and support and Ann for her guidance.

Michael Sullivan is a founding Mustard Seed Resident Artist, an Associate Professor of theatre at Fontbonne, Technical Director and resident Lighting Designer. MST designs include *Fiddler on the Roof*, *Fires in the Mirror*, *The Chosen*, and *An Almost Holy Picture* (Kevin Kline nomination for Outstanding Lighting Design), along with the upcoming *Till We Have Faces*. Michael recently designed *Equus* for HotCity Theatre. Much love to Jane, Mark and Zoe.



BIOGRAPHIES – CREW

Jean Lang is pursuing a B.A. in Performing Arts with a Teaching Certificate. Most recently she Stage-Managed *The Chosen* and appeared in the departmental production of *Twelfth Night*.



Bess Moynihan currently works as the Master Electrician and Production Manager for Fontbonne University and Mustard Seed Theatre. Some previous design credits include Fontbonne's *The Big Slam* and *Red Herring*, Mustard Seed's *Tartuffe*, and The Orange Girls' *Wonder of the World*.

Zoe Sullivan was most recently seen in *Twelfth Night* (Olivia) with Fontbonne Theatre, *The Cassilis Engagement* (Dorset) with ACT Inc., and *Tartuffe* (Mariane) with Mustard Seed.

Justin Walker is a senior at Fontbonne. He recently designed sound for *The Chosen*. Upon graduating, he hopes to work for a production company doing live sound or sound recording.

Josie Zeugin was seen in Fontbonne's December production of *Twelfth Night*. Before that, she appeared in Clayton Community Theatre's *Anne of Green Gables* as Miss Stacy, and was behind the scenes as hair and wardrobe crew.

SYNOPSIS

ACT I

C.S. Lewis, in his 50's, begins correspondence with Joy Gresham. Joy is a New Yorker, who amuses Lewis with her odd familiarity and straight-forward nature. Despite the cynicism of his friends, Lewis agrees to meet Joy and her young son for tea when they visit during December. Later, during a Christmas party at Lewis' and Warnie's apartment, Joy reveals her crumbling marriage and uncertain future. Shortly after her departure, Lewis is struck by how much he misses Joy's company and is pleasantly surprised by her decision to relocate to Oxford. They visit frequently and Lewis agrees to marry her so that she can gain citizenship. Their relationship remains close but platonic. However, all is not well, as Joy sinks into illness.

ACT II

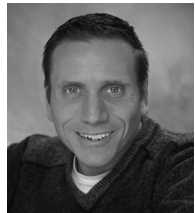
Joy is diagnosed with bone cancer. It has advanced considerably and Lewis struggles with the thought of losing her. Realizing his true feelings for Joy, he proposes to truly marry her. She goes into remission and is allowed to leave the hospital. Joy moves in with Warnie and Lewis, bringing Douglas with her. She and Lewis decide, with Warnie's prodding, to go on a honeymoon together to Greece. They savor each other's company, knowing that their time together will be brief. Joy lives for another three years before passing away, leaving Lewis and Douglas in turmoil, questioning the character of God.

BIOGRAPHIES– CAST



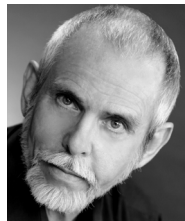
Gary Wayne Barker is one of the founding Resident Artists of Mustard Seed Theatre and the Chair of the Fine Arts Department at St. Louis University. He has performed, directed, and taught internationally. Mustard Seed audiences will remember Gary as Samuel Gentle in *An Almost Holy Picture* and as Tartuffe.

Charlie Barron is pleased to make his debut with Mustard Seed. Recently you may have seen him as Jan in the Actor's Studio production of *Rock & Roll* and Tom in the Dramatic License production of *That Championship Season*. He would like to thank Deanna Jent for this opportunity and also the cast and crew for their hard work. He would also like to thank his friends and family for their constant love and support.



Michael Brightman is very happy to once again be a part of a Mustard Seed production. Past productions with Mustard Seed include *Tartuffe* and *Fiddler On The Roof*. Michael thanks Deanna for her continued faith, support and guidance.

David Chandler is a Senior at Fontbonne University and is thrilled to be working on another Mustard Seed Theatre show! He would like to thank his family for their continued support and all the cast and crew for many smiles.



Richard Lewis has been in four other Mustard Seed productions: *Measure for Measure*, *Fiddler on the Roof*, *Tartuffe*, and *The Chosen*. Richard is a faculty member at Fontbonne University in the Department of Communication Disorders and Deaf Education.

Jackson Mabrey is very happy to return to Mustard Seed, where he was last seen as Laurent in *Tartuffe*. Jackson has appeared at the Repertory Theatre of St. Louis's WiseWrite Festival and as the boy's voice in *An American Daughter* at Okoboji Summer Theatre. He is a student at Kennard Classical Junior Academy.

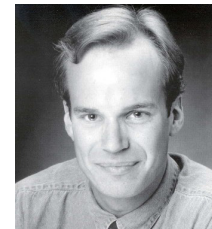


BIOGRAPHIES– CAST



Terry Meddows has worked with many of St. Louis' professional companies: Echo Theatre, Historyonics, The New Jewish Theatre, HotCity Theatre, New Line Theatre and Don Price productions, and was last seen in Mustard Seed's production of *Measure for Measure*.

Kelley Ryan is one of the founding Resident Artists of Mustard Seed Theatre. Kelley's play *And Carl Laughed* earned a nomination for Amnesty International's Freedom of Expression Award. She teaches theatre at Clayton High School.

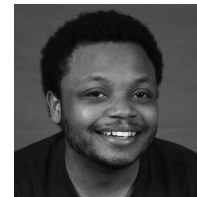


B. Weller was most recently in *A Feminine Ending* for the Non-Prophet Theatre Company and *Laughter on the 23rd Floor* at the New Jewish Theatre. Mustard Seed audiences may remember B. from the staged reading of *The Unseen* and *The Good Times are Killing Me*.

Carmen Larimore Russell is a Resident Artist and the Managing Director of Mustard Seed. She has worked both onstage and off: acting in *Tartuffe* and Stage Managing *The Good Times are Killing Me*. She is an Associate Professor of speech-pathology at Fontbonne.



BIOGRAPHIES– DESIGNERS



Kareem Deanes is a Mustard Seed Resident Artist and an alumnus of Fontbonne. He teaches at Parkway West Middle School. In addition to sound design for numerous Fontbonne productions, he has designed for Act Inc and Soundstage Productions.

Courtney Sanazaro is excited to be returning to Mustard Seed this season! Her recent set designs include *That Championship Season*, *Fires in the Mirror*, *The Hourglass*, *Company*, *Sunday on the Rocks*, *The Buried Child*, and *Medea*.

